



МЕРКУРИЙ-ИНТЕР-ЛАБ

mindray

healthcare within reach

BS-120

Chemistry Analyzer



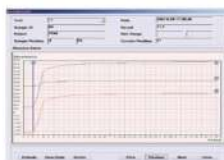
BS-120 Chemistry Analyzer

- Discrete, random access, fully automated
- 100 tests per hour, up to 300 tests per hour with ISE
- Up to 33 onboard chemistries and 3 ions
- Refrigerated reagent compartment
- Flexible configuration for sample/reagent positions
- Automatic probe cleaning, liquid level detection & collision protection
- 8 wavelengths: 340–670nm
- Automatic dilution for abnormal sample
- External bar code reader (optional)
- Bi-directional LIS interface



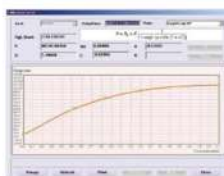
Dynamic and Real-time display of running status

- Running status of reagent/sample tray and reaction tray
- Real-time monitoring of reagent residual volume
- Real-time diagnosis of system working status



Original reaction data record

- Real-time monitoring of reaction
- Bichromatic testing to avoid interference
- Simultaneously display primary and secondary wavelengths
- Detailed profile of alert messages



Optimum calibration curve

- Linear curve types: One-point linear, Two-point linear and Multi-point linear
- Nonlinear curve types: Logistic-Log 4P, Logistic-Log 5P, Exponential 5P, Polynomial 5P and Spline



Flexible sample/reagent tray

- Optional external reagent/sample bar code reader
- Up to 33 positions for sample, up to 35 positions for reagent
- Up to 20/10 virtual sample/reagent trays can be programmed
- 24 hour non-stop cooling with Peltier elements



High quality ISE module (optional)

- Measurements of K⁺, Na⁺, Cl⁻
- 6 months shelf life



Disposable reaction cuvettes

- Disposable cuvettes to avoid carry-over and to save testing costs
- Automatic cuvettes blank testing to assure precise results



High performance mixer design

- Avoid cross contamination
- Optimal homogenization in minimum time
- Thoroughly mixes after dispensing of sample or second reagent

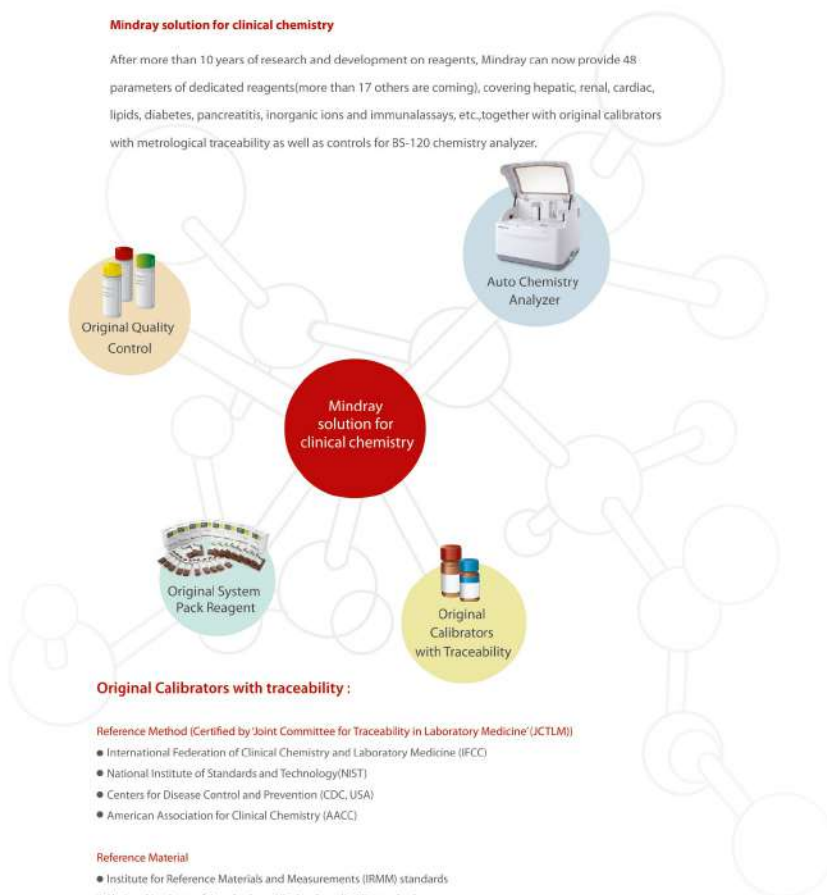
Единый бесплатный номер 8(800)-200-10-16
8(831)-215-00-98

электронная почта: nn@mil-nn.ru

cmtrade.ru

Mindray solution for clinical chemistry

After more than 10 years of research and development on reagents, Mindray can now provide 48 parameters of dedicated reagents (more than 17 others are coming), covering hepatic, renal, cardiac, lipids, diabetes, pancreatitis, inorganic ions and immunoassays, etc., together with original calibrators with metrological traceability as well as controls for BS-120 chemistry analyzer.



Original Calibrators with traceability:

Reference Method (Certified by 'Joint Committee for Traceability in Laboratory Medicine' (JCTLM))

- International Federation of Clinical Chemistry and Laboratory Medicine (IFCC)
- National Institute of Standards and Technology (NIST)
- Centers for Disease Control and Prevention (CDC, USA)
- American Association for Clinical Chemistry (AACC)

Reference Material

- Institute for Reference Materials and Measurements (IRMM) standards
- National Institute of Standards and Technology (NIST) standards
- World Health Organization (WHO) standards
- Japan Committee for Clinical Laboratory (JCCLS) standards

Chemistry Reagents

Hepatic Alanine Aminotransferase (ALT) Aspartate Aminotransferase (AST) Alkaline Phosphatase (ALP) γ-Glutamyltransferase (γ-GT) Direct Bilirubin (D-Bil) DSA Method Direct Bilirubin (D-Bil)VOX Method Total Bilirubin (T-Bil) DSA Method Total Bilirubin (T-Bil)VOX Method Total Protein (TP) Albumin (ALB) Total Bile Acids (TBA) Prealbumin (PA) Adenosine deaminase (ADA) * α-L-fucosidase (AFU) * 5'-nucleotidase (5'-NT) *	Lipids Total Cholesterol (TC) Triglycerides (TG) HDL-Cholesterol (HDL-C) LDL-Cholesterol (LDL-C) Apolipoprotein A1 (ApoA1) Apolipoprotein B (ApoB) Lipoprotein(a) [Lp(a)]
Renal Urea (UREA) Creatinine (CREA) Modified Jaffe Method Creatinine (CREA) Sarcosine Oxidase Method Uric Acid (UA) Microalbumin* β2-Microglobulin (β2-MG) * Cystatin C (CysC) *	Pancreatitis α-Amylase (α-AMY) Lipase (LIP)
Cardiac Creatine Kinase (CK) Creatine Kinase-MB (CK-MB) Lactate Dehydrogenase (LDH) α-Hydroxybutyrate Dehydrogenase (α-HBDH) Myoglobin*	Diabetes Glucose (Glu) GOD-POD Method Glucose (Glu) HK Meth Fructosamine (FUN)
Ferrum Iron (Fe) Ferritin (FER) * Transferrin (TRF) * Total iron binding capacity / unsaturated iron Binding capacity (TIBC/UIBC) *	Inorganic Ions Calcium (Ca) Magnesium (Mg) Phosphate Inorganic (P)
	Rheumatism High sensitivity C-reactive protein (hs-CRP) * Rheumatoid Factor (RF) Antibodies Against Streptolysin O (ASO)
	Immune Immunoglobulin A (IgA) Immunoglobulin G (IgG) Immunoglobulin M (IgM) Immunoglobulin E (IgE) * Complement C3 (C3) Complement C4 (C4) C-Reactive Protein (CRP)
	Others Glucose-6-phosphate dehydrogenase (G6PD) * D-dimer* Angiotensin converting enzyme (ACE) * Retinol binding protein (RBP) * D3-hydroxybutyric acid (D3-HB) *

* Coming soon



Работайте с лучшими, всё остальное компромисс!

8(800)-200-10-16 | nn@mil-nn.ru